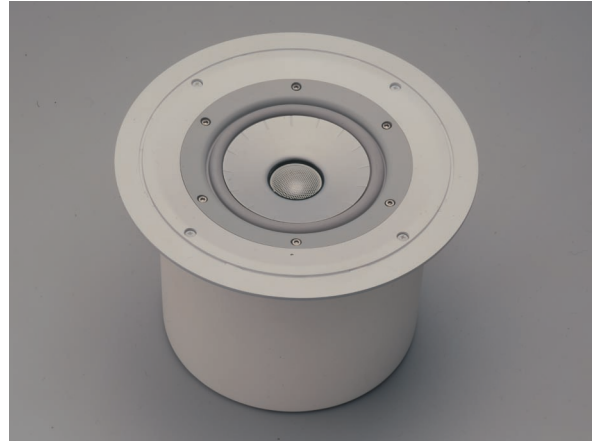


Introducing the new THIEL  
**HigherPlane**

*High Performance In-Ceiling Coherent Source® Loudspeaker*



The new THIEL HigherPlane is an in-ceiling version of THIEL's in-wall PowerPlane and the award-winning surface-mount PowerPoint using the same high performance time and phase correct coaxial drivers and crossover design as both to offer a much higher level of resolution and realism than found in conventional in-ceiling loudspeakers.

The HigherPlane's 11-inch diameter, paintable, aluminum baffle and grille disappear into the ceiling, leaving only the excellent sounds from your favorite music or movies. A special preconstruction mounting bracket is available to simplify installation into new home construction.

### **THIEL HigherPlane Performance Features**

- **In-ceiling design allows for a wide variety of placement locations when space is a factor.**
- **Coaxial driver mounting insures accurate, natural sound regardless of speaker placement or listener location.**
  - **Self-enclosed, rigid cabinet reduces unwanted vibration for greater clarity.**
- **2-way driver system employs very low distortion, short coil, long gap motor systems, very rigid aluminum diaphragms, and powerful magnets for superior reproduction.**
- **Phase coherent crossover networks preserve spatial and transient information for greater realism.**

### **THIEL HigherPlane Specifications**

<b>Bandwidth (-3 dB)</b>	75 Hz–20 kHz
<b>Amplitude response</b>	75 Hz–20 kHz $\pm 3$ dB
<b>Phase response</b>	minimum $\pm 10^\circ$
<b>Sensitivity</b>	89 dB @ 2.8 V-1m
<b>Impedance</b>	4 ohms (3 minimum)
<b>Recommended Power</b>	30-200 watts
<b>Size (W x D x H)</b>	11 inches diameter, 7.75 inches deep
<b>Weight</b>	10 pounds
<b>Warranty</b>	10 years

*Preconstruction brackets available for 16 and 24-inch off-center framing*

### **THIEL HigherPlane Coaxial Array**

*The HigherPlane uses a coaxial/coplanar 6.5-inch woofer and 1-inch dome tweeter that employ THIEL's innovative short coil/long gap motor system for extremely low distortion. Designed and built in-house by THIEL, the drivers use extremely rigid aluminum diaphragms for outstanding tonal response and the tweeter is the same unit as used in THIEL's flagship model, the CS7.2. Powerful, but small*



*neodymium magnets allow the driver array to be built small enough to fit the compact enclosures, but still deliver outstanding performance. The powerful magnet system improves the speaker output capability and increases efficiency, important characteristics for use in today's home theater systems.*

## ***Celebrating 25 Years of Ultimate Performance Loudspeakers***

THIEL • 1026 Nandino Boulevard, Lexington, Kentucky, 40511 • telephone: 859-254-9427 • fax: 859-254-0075  
e-mail: mail@thielaudio.com • web: www.thielaudio.com